

Scip Universal Receiver™

STUR

Installation guide



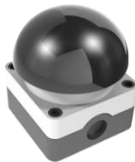
For use with:



STKR-1



STHR-4



STPB-1



STPB-2

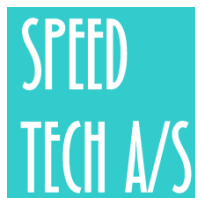


STPB-3

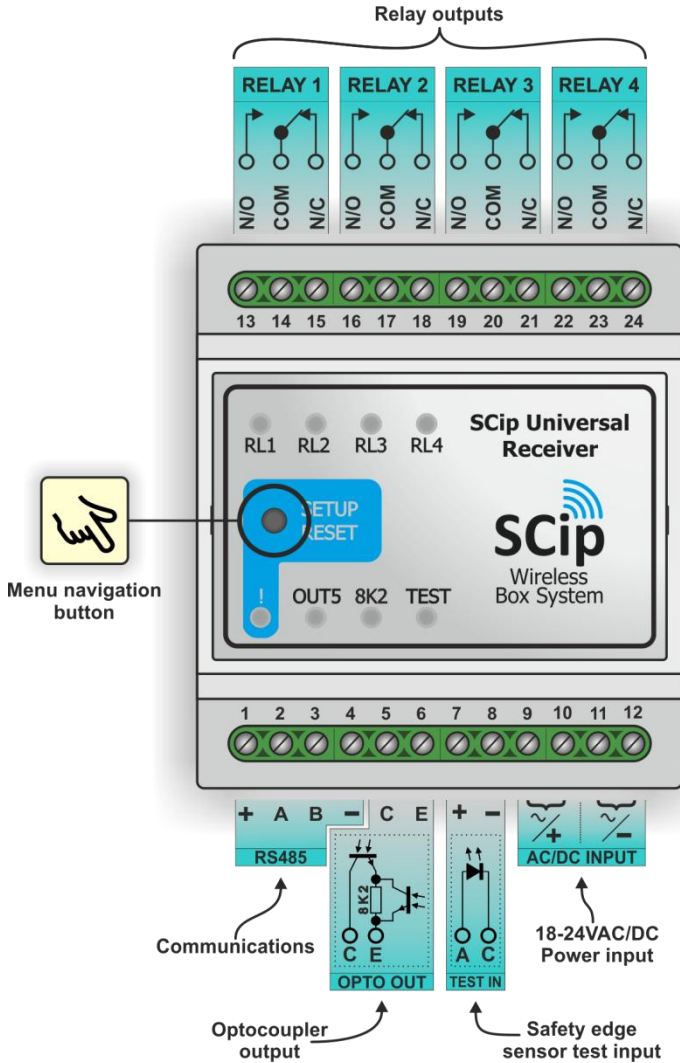


STPS-1

- Supports up to 16 clients
- Two way communication
- Wide operating temperature span
- Low power consumption (<0.5W idle mode)
- Compatible with DIN rail standard EN 50022



CONNECTIONS



Connections:

Terminal:	Function:	Details:
1 to 4	Communications	Industry standard RS485 communications port
5 to 6	Optocoupler output	Galvanically isolated optocoupler output with optional 8K2 Ohms series resistor
7 to 8	Test input	For safety edge class II test
9 to 12	Power input	18-26V DC/AC power input
13 to 24	Relay outputs	4 x electrically/galvanically isolated N/O - N/C relay outputs

ADD DEVICE

Repeat these steps to add a device to one of the outputs on the Universal Receiver.

1. Activate programming mode



Press setup/reset once



2. Select output



Press setup/reset multiple times to select the desired output

3. Add



Activate the device to add to the selected output

4. Deactivate programming mode



Press setup/reset multiple times to select the ! LED
(Or wait approx. 30 seconds)

Icon description:



Single press



> 1 sec.

Press and hold for more than 1 second



> 10 sec.

Press and hold for more than 10 seconds



Press to step one or more



Internal beeper audible feedback



Lamp flashing



Lamp lit



Activate SCIP client

REMOVE DEVICE

Repeat these steps to remove one or all devices from the Universal Receiver.

Reset one output

1. Activate reset mode



Press and hold setup/reset for more than 10 seconds

2. Select output



Press setup/reset multiple times to select the desired output

3. Reset output



Press setup/reset to reset the output

Reset all outputs (and the radio channel)

1. Activate reset mode



Press and hold setup/reset for more than 10 seconds

2. Select all



Press setup/reset multiple times to select the all outputs

3. Reset all



Press setup/reset to reset all outputs and the radio channel

Technical data:

Wireless range (indoor):	15m
Network type/frequency:	2.4GHz ISM band
Maximum clients:	16
Relay contact ratings (res.)	120VAC/0.5A - 24VDC/1A - 60VDC/0.6A
Input specifications:	18-24V DC – Optical isolated
Power supply:	18-24VAC/DC (rectified input)
Temperature range:	-20~50°C
NEMA IP rating:	20

Dimensions:	Outer dimensions:
	86 x 70 x 58mm (H x W x D)
	DIN standard top hat rail EN 50022: 35 x 7.5mm (rail H x D)

Weight:	150g
---------	------